

SOCIAL PLANNING IN DURHAM...



A SUMMARY OF CDCD'S SOCIAL
PLANNING STAKEHOLDER SURVEY

INTRODUCTION

SOCIAL PLANNING IN DURHAM

Social planning is a key component to the success and vibrancy of a community. Through issue identification, education, and thoughtful strategic discussions, we can help ensure that the individuals and families who live together will experience a better quality of life. In Durham Region, this means making sure these individuals feel included, safe, supported, and informed about how decisions will uniquely effect our community. By engaging stakeholders providing programs and serving Durham residents, we hope to provide a background for focusing these efforts.

STAKEHOLDER SURVEY

In the Spring of 2019, CDCD distributed an electronic survey to stakeholders across Durham Region with the purpose of informing priority levels of key social issues in the community, and how social planning can help address them. The 5 question survey was sent only to stakeholders and professionals within Durham Region, but was not made available to the general public. These questions focused on issue identification specific to Durham Region, and what research or planning services are most important for our community. Respondents were offered the opportunity to comment on each question, elaborate on their answer, or provide additional options not listed.

COMMUNITY DISCUSSION

On May 29th, 34 stakeholders gathered to discuss the results of the survey at the Pickering Public Library. After a brief synopsis, Peter Clutterbuck on behalf of the Social Planning Network of Ontario (SPNO) provided a presentation on the history of social planning in Ontario, and the unique aspects of efforts in Durham Region. For the latter portion of the meeting, stakeholders engaged in discussions regarding top issues and local changes identified in the survey, and which social planning services can positively impact them. At the end of the session, participants were asked to identify existing planning networks in Durham Region who at some level provide this work.

SURVEY RESULTS



80

STAKEHOLDERS
from across
Durham Region
completed this
survey

1



58%

Chose Lack of Affordable Housing as the #1 social issue in Durham Region.

2



36%

Believe providing non-biased, accurate research on local social issues is the most important role of a social planning council.

3

The top 3 changes most in need of social planning support in Durham were:

22%

REGIONAL GOVERNMENT
REVIEW



25%

GM CLOSURE



28%

BASIC INCOME
CANCELLATION



Identified as the most
important services a
social planning
council should provide.

27%

Data on specific
issues, sectors,
&
demographics

Qualitative storytelling
from marginalized
communities and
individuals

25%

4



Non-Profit



Municipal
Governments



Indigenous
Bands/
Councils



Lived Experience of Social
Inequity



Regional
Government

Top 5 Sectors respondents believe
should be present at a social planning
council table

5

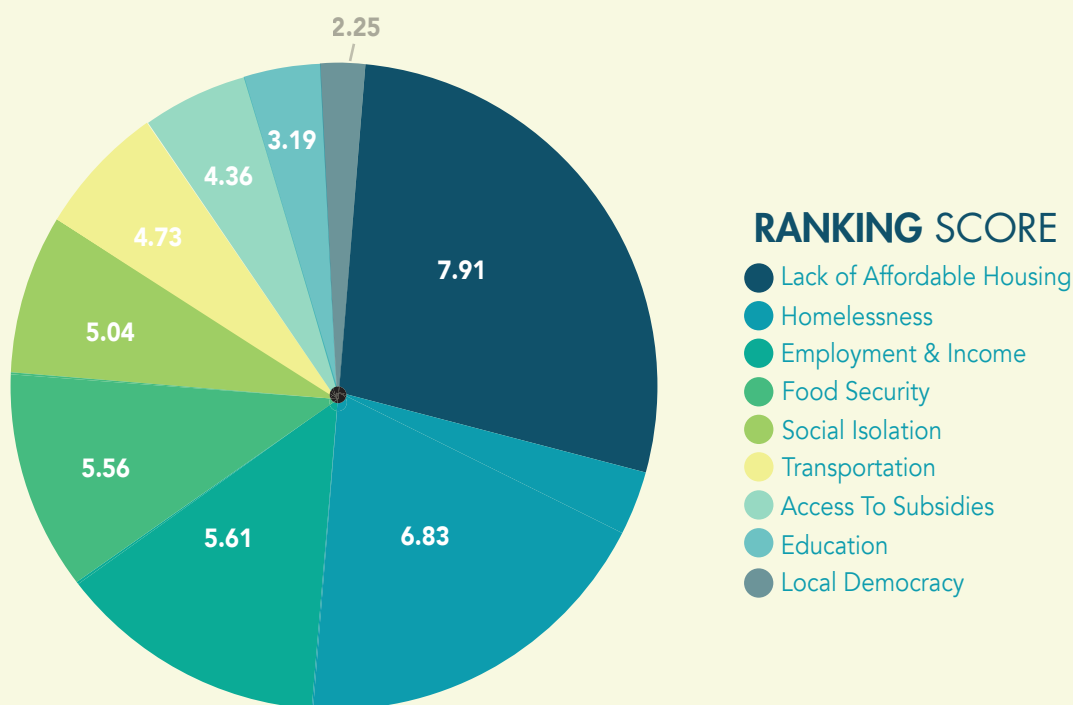
CRITICAL SOCIAL ISSUES

“For Community Awareness on projects that have been studied, we sometimes forget about the involving the community. Only way to help alleviate stigmatization of the marginalized population is by creating a voice for them” – Survey responder



“There are issues relating to people who have disabilities being fully welcomed into their community” – Survey responder

CERTAIN SOCIAL ISSUES REQUIRE IMMEDIATE ATTENTION IN THE REGION OF DURHAM. PLEASE RANK FROM THE **MOST** CRITICAL (1) TO THE **LEAST** CRITICAL (9)



In order to identify priority issues within the Region of Durham’s social services sector, respondents were asked to rank social issues that required attention from the most critical to least critical. These issues were scored between 1 to 9, which produced an overall ranking out of 9 (see graph above), as well as the percentage of respondents who selected a specific issue as most critical.

it was the most critical by a margin of one full point ahead of any other social issue. While certain social issues intersect with others (i.e., employment & income and food security), it is important to note that community stakeholders believed issues related to affordable housing and homelessness should be addressed first in the Region of Durham.

As illustrated in the graph, 'lack of affordable housing' and 'homelessness' were viewed as critical issues. When combined together, over 75% of respondent believed

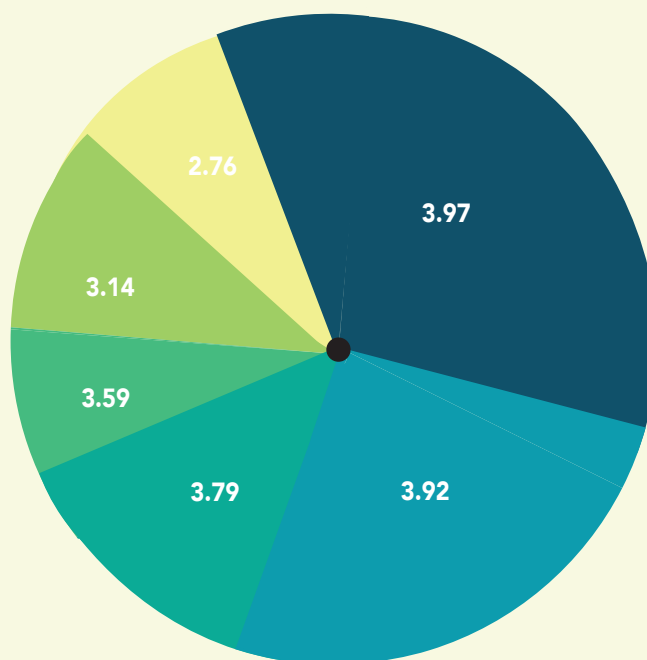
MAJOR CHANGES IN DURHAM

“Impending changes to mental health services structure, and employment services structure” – Survey responder



“Environmental catastrophes looming: climate change, species eradication, water contamination, and mostly the reduction of consumption behaviours” – Survey responder

PLEASE RANK FROM THE **MOST** RELEVANT (1) TO **LEAST** RELEVANT (6).
WHICH OF THESE CHANGES REQUIRES MORE SOCIAL RESEARCH, PUBLIC AWARENESS,
AND ADVOCACY THROUGH SOCIAL PLANNING IN DURHAM.



RANKING SCORE

- Implementation of Bill 47 and Repeal of Bill 148
- Cancellation of the basic income project
- Closure of General Motors
- Changes to OSAP/Post-Secondary funding
- Regional government review (governance and service delivery)
- Changes to Ontario education curriculum

In a six month period stretching from the 2018 Provincial election to the spring of 2019, the Region of Durham experienced a number of changes that could result in tremendous impact locally. Respondents were asked to rank which change required the most social research, public awareness, and advocacy through social planning in Durham. Cancellation of the basic income project (28%), closure of General Motors (25%), and the regional government review (22%), were selected most often as most in need of social planning services. However, as the graph indicates, implementation of Bill 47/repeal of Bill 148 and changes to OSAP/Post-secondary funding scored higher than one or more of these selections on the overall ranking score. It is possible that respondents' first selections reflected changes pertaining to their particular sector, while remaining rankings followed a more consistent pattern.

SOCIAL PLANNING COUNCIL'S ROLE

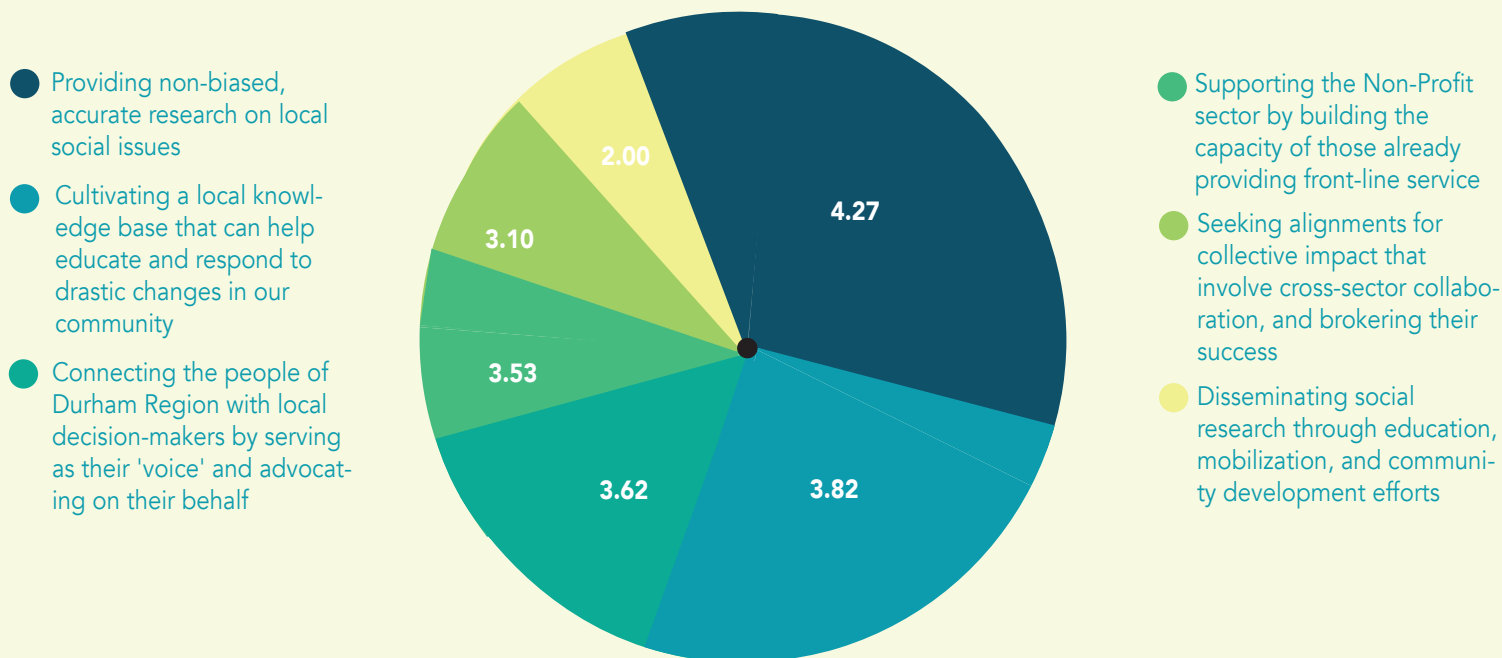
“Providing opportunities for communities to come together to both strengthen communities & identify their needs/priorities”
– Survey responder



“Provide opportunities for collaboration, learning and support.”
– Survey responder

RANK A SOCIAL PLANNING COUNCIL'S ROLE IN THE
REGION OF DURHAM FROM **MOST** RELEVANT TO **LEAST** RELEVANT

RANKING SCORE



In order to determine what gaps specific to Durham Region an active social planning council could fill, respondents were asked to rank a potential council's roles listed from most relevant to least relevant. *Providing non-biased, accurate research on local social issues* was the predominant selection as most relevant among respondents (36%), and in overall score. Other than '*dissemination of social research through education and mobilization...*', all roles fell within less than one point of each other in

overall score. *While providing non-biased, accurate research* is the most relevant need, the data suggests a variety of roles in Durham require filling.

36% believe *providing non-biased, accurate research on local social issues* is the most important role of a social planning council

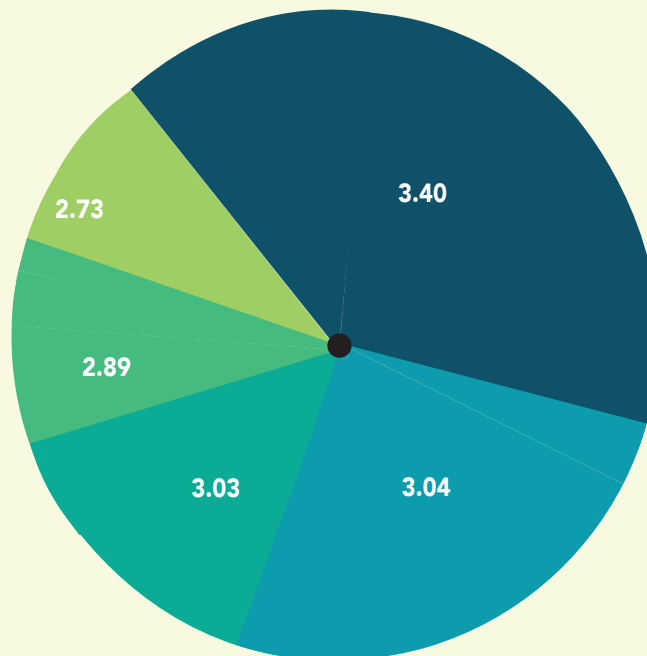
IMPORTANCE OF RESEARCH SERVICE

“Evaluations on local projects & to access their impacts and to provide consultations on how to improve local projects”
– Survey responder



“Standardized services for seniors and accessibility”
– Survey responder

PLEASE RANK WHICH RESEARCH SERVICES A SOCIAL PLANNING COUNCIL IN DURHAM SHOULD PROVIDE.



- Data on specific issues, sectors, and demographics in our community
- Research support for non-profits and service agencies pertaining to their clientele, service delivery, or funding
- Community and Regional trends interpreted and analyzed through Census and other data sources
- Qualitative storytelling from marginalized communities and individuals, or those impacted by changes in their community
- Develop a repository of local report-based social research for all to access online

Social research has the potential to positively affect critical issues in our community. Knowing this, respondents were asked to rank the research services a potential social planning council could provide from the most important to the least important. While data on specific issues, sectors, and populations had the highest rank, it did not overwhelmingly exceed the scores of the other services listed. In fact, all services were ranked within one point of each other in the overall tally. As a result, it's likely there is

a similar level of need for a variety of social research services throughout Durham Region, rather than an overwhelming need for one particular service.

Which sectors should provide active participation on a social planning council in the Region of Durham?

WHICH SECTORS SHOULD BE REPRESENTED ON A SOCIAL PLANNING COUNCIL,
WITH NO LIMIT TO THE NUMBER OF SELECTIONS?

| ANSWER CHOICES | RESPONSE % |
|-------------------------------------|------------|
| Non-Profit | 90% |
| Regional Government | 89% |
| Municipal Governments | 87% |
| Indigenous bands/councils | 87% |
| Lived experience of social inequity | 85% |
| Community members | 84% |
| Health Care | 81% |
| Police and Emergency Services | 76% |
| Post-Secondary Research | 71% |
| Public Education Boards | 66% |
| Libraries & community centres | 65% |
| Private/Business Sector | 60% |
| Post-Secondary Administration | 49% |



SOCIAL PLANNING IN DURHAM

COMMUNITY DISCUSSION

May 29th, 2019



INTRO & EVENT DESCRIPTION

Stakeholders met at the Pickering Public Library to learn about the results of the critical issues survey conducted in the late winter of 2019. A breakdown of the results was provided, highlighting key issue areas and social research priorities. Afterwards, all who were present participated in facilitated group discussion, and were asked to identify why they felt some issues scored high and low.

DISCUSSION BREAKOUT TOPIC SUMMARIES

For the facilitated groups, the top scoring critical issues and major changes identified through the survey were presented separately. These groups entered into a discussion on why they felt these changes or issues arose, and why survey respondents felt their implications had such impact. After this, the groups were asked to list ways social planning and research could help alleviate any negative impact, and provide other strategies they felt could help. Participants then rotated to another table and repeated the exercise.

NETWORK EXERCISE DESCRIPTION

Results of group exercise: Critical Issues

Homelessness.

- Not enough money for working poor
- Receive social assistance for basic income
- Yearly PIT count to develop research to impact policy
- Lack of affordable housing and available jobs
- Increase in minimum wage effect employers hiring individuals with disabilities and lower skills

Employment & Income.

- Research - Employment related planning is needed -Durham workforce authority
- Use research to have policies created and implemented to address the issue
- Government support subsidies for low income & mental health affected population
- Cultivate the local knowledge in the community to help with change

Food Security.

- Avoid duplication of research
- Map where groceries are located: Traditional & non-traditional(The dollar store); Food banks, etc.
- Amount of bus fare is a barrier
- Logistics of getting food
- Cost of junk food vs. healthy food
- Location of farmer's markets
- Create more local community gardens
- Supply seeds and plants
- Build Relationship with Durham farmers
- Duplicate good programs i.e. Seed bank (Beaverton)
- Provide bus tickets at food banks
- Disseminating resources not information (access)

Affordable Housing.

- Conducting more research
- Gathering information and passing to agencies dealing with those problems
- Help and collaboration between affordable housing, realtors and landlord
- Advocacy - lobby governments
- Support the non-profit sector
- Knowledge for support on front-line
- Education using lived experience
- Common voice- just one. Be active

Social Isolation.

- Lack of collective impact processes
- Inability to participate in community and employment market eventually causes apathy
- Families impacted by change don't participate
- Economic instability keeps individuals engaging
- Marginalized populations require focus

NETWORK EXERCISE

DESCRIPTION

Results of group exercise:
Major Changes

Closure of GM

- Coordinate the data of people who lost jobs
- Work with the GM Union
- Service Ontario to connect with new potential employers
- Retraining- connecting with education bodies
- Help with budgeting with less income – banks to help and give guidance
- Cultivate the local knowledge in the community to help with change (role of social planning)

Regional Government Review

- Influence on how to work collectively
- Making reporting needs known to all
- Funding better planned by type of zone
- More advocacy for rural vs urban issues
- Education on impact of more vs less local democracy
- Coordinate with other Regional social planning councils to form a common purpose

Change: Bill 47 and 48 Repeal

- Educate people on how to advocate for themselves
- Getting involved in Salvation Army or organizations that can help
- More research on how this bill impacts homelessness
- Bring Living Wage report back
- Focus groups with people who this bill directly impacts
- Looking at impacts on minimum wage on house hold
- Research relationship between Student wage and minimum wage
- Looking at impact on minimum wage on all areas of Life: Health, inclusion, education, etc.
- Cancellation of basic income: Evaluate impacts of basic income cancellation

OSAP/Post Secondary Funding

- SPC-measuring impact on students & graduation rates
- Impact on job rates, kind of jobs: lower paying jobs to pay back loans
- Looking ahead: Coaching on how to spend money and not become under-employed
- Kind of courses taken at school vs labour trends
- Less funding in post-secondary creates crunch on research activity and teaching
- SPC-Private partnership with industry for stable funding. For example: Canadian Tire helps children by supporting them in education
- Coding for veterans to bring them back to workforce
- Co-ops for children for stable jobs

SOCIAL PLANNING IN DURHAM SUMMARY

This document is to serve as an in-time resource for planning across Durham Region, and will be updated on a regular basis. Social planning efforts are complex, and often involve different levels of community engagement, political advocacy, and service or systems planning for organizations and governments. By identifying local issues we hope this can contribute to conversations that are necessary to initiate change. By determining which planning and research services are most relevant in Durham, we hope to guide not only CDCD's direction, but provide an indication to all decision-makers, advocacy groups, and governments what gaps we are experiencing in Durham, or at the very least what services are under-utilized.

CDCD will continue its work on engagement and issue identification throughout Durham Region, and use information as a base for conversations. It is important to remember that these issues reflect real concerns felt by people who live in our communities, and we hope that this and other similar work in Durham will only contribute to a culture of inclusion, improved quality of life, and successful communities throughout our Region.

For more information, please contact Nathan Gardner
905 686 2661 x 119
ngardner@cdcd.org