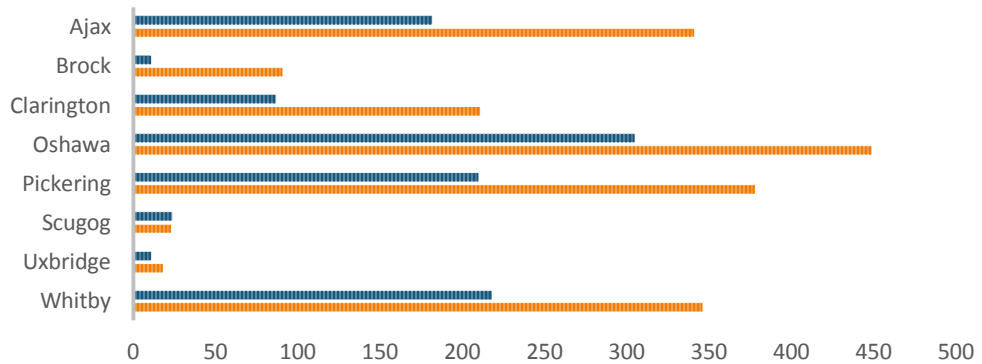


"Many social programs support families, but child care is the backbone of them all"
 (National Council of Welfare, 1999, p. 89)

SUBSIDIZED CHILD CARE PLACEMENTS AND WAIT LIST COUNTS BY MUNICIPALITY - JUNE 2005

■ Waiting list for fee subsidy ■ Subsidy allocation (averaged) children count



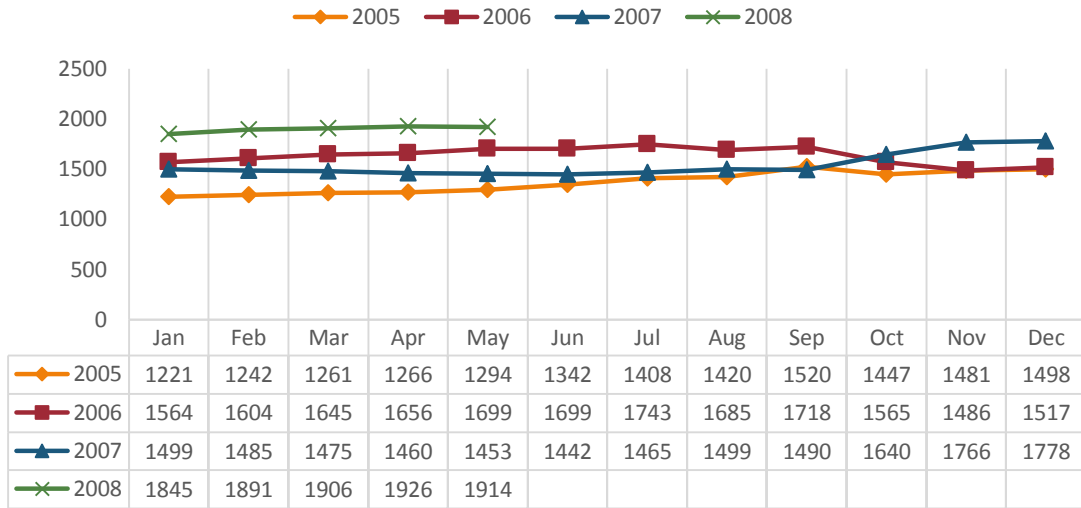
	Whitby	Uxbridge	Scugog	Pickering	Oshawa	Clarington	Brock	Ajax
■ Waiting list for fee subsidy	218	11	24	210	305	87	11	182
■ Subsidy allocation (averaged) children count	346	18	23	378	449	211	91	341

Subsidized Child Care Placements and Wait List Counts by Municipality – June 2005

In June 2005, Durham Region had allocated funding for a total of 1857 spaces of subsidized child care. A total of 1048 people remained on the wait list for subsidized child care at this time. Looking at the different municipalities, Oshawa provided the most spaces for subsidized child care which amounted to 449 spaces. The City of Oshawa also had the highest wait list of all the municipalities with a count of 305. The median rate of providing subsidized child care placements across Durham Region was 63.2% with Brock township providing the highest rate at 89.2% and Scugog providing the lowest at 48.9% (Regional Municipality of Durham, 2005).

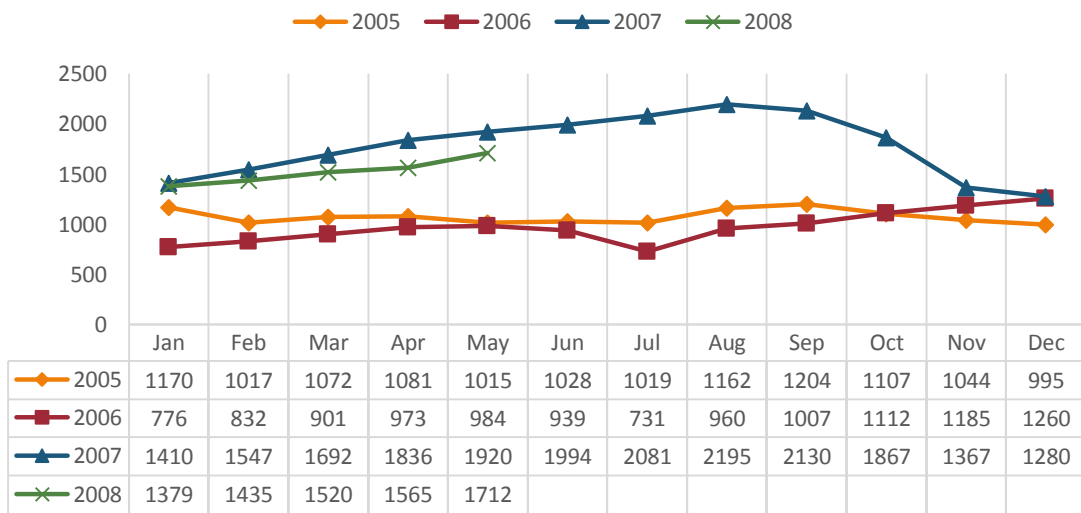
Community Lens Vol. 3

DURHAM REGION - ENROLMENTS IN SUBSIDIZED CHILD CARE*



*whereby subsidy funding is provided through Day Nurseries Act, Early Learning & Child Care, and Best Start

DURHAM REGION - CHILD CARE FEE SUBSIDY WAIT LIST



Subsidized Child Care Enrolments and Wait Lists January 2005 to May 2008

Overall, enrolments in subsidized child care have gradually increased from the start of 2005 to May 2008. A slight decrease in enrolments started in October 2006 and this continued throughout 2007 until October 2007, at which point enrolments increased again. While, enrolments in subsidized child care have increased, so has the need for these spaces. A steady increase in those on the wait list for child care subsidies started in August 2006 and carried into 2007, peaking in August 2007. At this time, there were 2195 children on the wait list. A significant decline occurred across the remainder of 2007; however, the data for 2008 reflects a similar pattern of increasing need present during the same months of 2007 (Regional Municipality of Durham, 2008).

Limitations

The data provided here offers a glimpse of the need for subsidized child care in Durham region. In consideration of the subsidized child care enrolments in Durham Region, the data is limited to certain kinds of subsidy funding and may not capture all kinds of subsidies. Additionally, these data do not address wait lists at individual day cares and do not capture the full scope of child care needs. Challenges for families requiring care for children with special needs, cultural considerations, and other diverse needs is not reflected here. Finally, more recent data would be helpful in providing a more accurate representation of subsidized child care placements and wait lists in Durham Region.

References

- National Council of Welfare. (1999). Preschool children: Promises to keep. Retrieved from http://publications.gc.ca/collections/collection_2012/cnb-ncw/H68-48-1999-eng.pdf
- Regional Municipality of Durham. (2005). Early learning and child care service management plan 2004-2006. Retrieved from http://www.durham.ca/departments/social/childcare/beststart/Early_Learning_Child_Care_Service_Mgmt_Plan.pdf
- Regional Municipality of Durham. (2008). Best start 2008-2009: Integrated status update. Retrieved from <http://docplayer.net/41589082-The-regional-municipality-of-durham-best-start-integrated-status-update-draft-pending-ministry-approval-june-2008.html>